



PMI-Technology Sdn Bhd

Company No. 568062-K

YOUR SOLUTION PARTNER FOR SOLID/LIQUID FILTRATION TECHNOLOGY

- Vertical tank type filter with vertical leaves on a central bottom outlet
- Recommended for optimum use of floor space
- Low initial cost with large filtering area



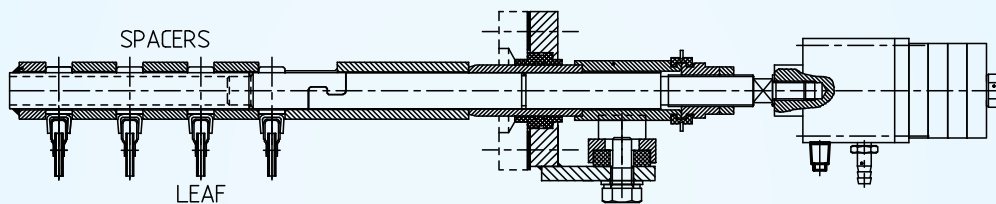
## Pressure Leaf Vertical Type PLV(D) / PLV(W) Filter

## PLV (D) – Dry Cake Discharge Filter

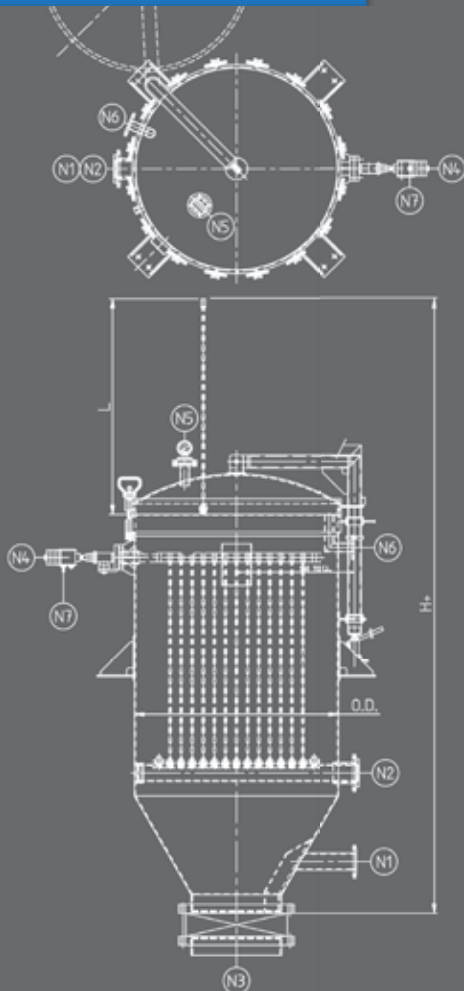
Type PLV(D)	Filter Area (m <sup>2</sup> )	Cake Volume (litre)	Number of Leaves	L=Leaf Height (mm)	Filter Volume (litre)	Leaf Pitch (mm)	Foot Print (mtr)	H+ (mtr)	Weight (kg)
780/8	8	175	9	920	800	70	1.75 x 1.09	3	650
900/8	8	175	7	920	1000	70	1.2 x 1.25	3.2	800
900/10	10	220	9	920	1000	70	1.2 x 1.25	3.2	800
900/12.5	12.5	275	11	920	1000	70	1.2 x 1.25	3.2	800
1100/15	15	330	9	1250	2000	70	2.4 x 1.7	4	1100
1100/17.5	17.5	385	9	1250	2000	70	2.4 x 1.7	4	1100
1100/20	20	440	11	1250	2000	70	2.4 x 1.7	4	1100
1225/23.5	23.5	520	11	1225	2500	75	2.2 x 2.6	4.2	1725
1225/25	25	550	11	1225	2500	75	2.2 x 2.6	4.2	1725
1225/27	27.5	590	13	1225	2500	75	2.2 x 2.6	4.2	1725
1225/30	30	660	15	1225	2500	75	2.2 x 2.6	4.2	1725
1380/30.5	30.5	670	11	1350	3600	75	2.9 x 2.10	4.5	1980
1380/35	35	770	13	1350	3600	75	2.9 x 2.10	4.5	1980
1380/38.5	38.5	850	15	1350	3600	75	2.9 x 2.10	4.5	1980
1500/42	42	920	13	1500	4500	75	3.1 x 2.3	4.9	2300
1500/46	46	1010	15	1500	4500	75	3.1 x 2.3	4.9	2300
1500/50	50	1100	17	1500	4500	75	3.1 x 2.3	4.9	2300
1500/60	60	1320	17	1650	4500	75	3.1 x 2.3	5.2	2500
1650/70	70	1590	16	1810	6300	75	3.8 x 2.65	5.5	3200
1650/78	78	1720	18	1810	6300	75	3.8 x 2.65	5.5	3200
1850/85	85	1870	18	1810	8200	75	3.45 x 3.9	5.7	4400
1850/100	100	2200	20	1810	8200	75	3.45 x 3.9	5.7	4400
2000/125	125	2750	24	1810	9400	75	4.5 x 3.25	5.8	4900

Discharge opening fitted with butterfly valve

## Vibrator Assembly – PLV (D)



## Tank Assembly Detail



### Construction Materials:

**Housing:** Standard in Carbon Steel or Stainless Steel 304/304L, 316/316L, Duplex or SMO. In special cases, Carbon steel with lining, Rubber or Halar lined and Special Alloys upon request.

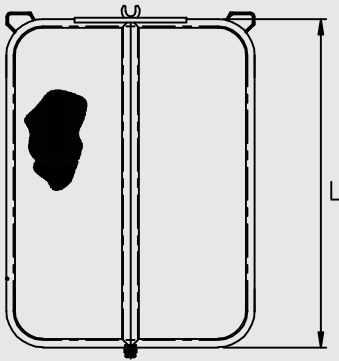
**Leaves:** Standard in 316L, 316S (NSCD/1.4539) or Duplex (1.4462). Full Polypropylene or other materials upon request.

Design in accordance with ASME code Section VIII Div.1 or other design codes upon request.

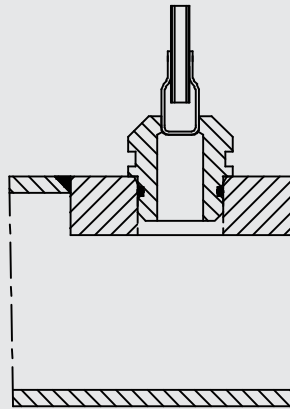
## Leaf Detail

## Filter Leaf Outlet Nozzle

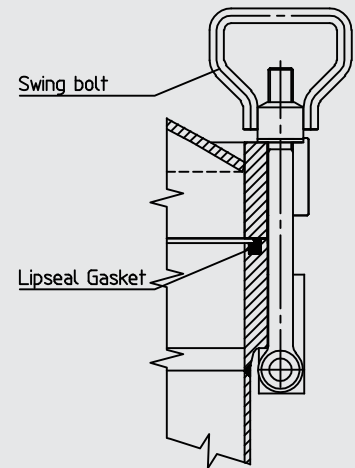
## Swingbolt-Handwheel Nut



Leaf detail



Filter Leaf outlet nozzle



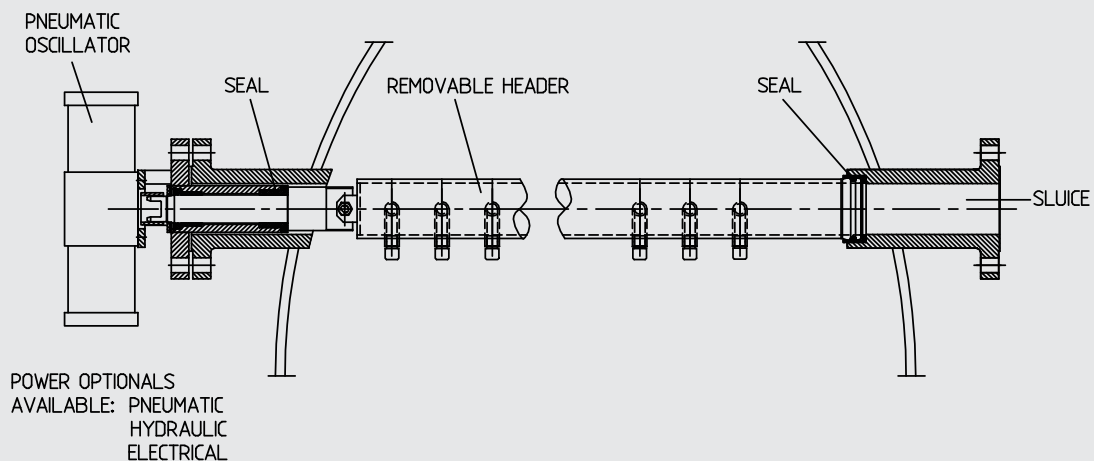
Swingbolt-Handwheel Nut standard (wedge lock, bayonet type closure, or other options upon request.)

## PLV (W) – Wet Cake Discharge Filter

Type PLV(W)	Filter Area (m <sup>2</sup> )	Cake Volume (litre)	Number of Leaves	L=Leaf Height (mm)	Filter Volume (litre)	Leaf Pitch (mm)	Weight (kg)
500/3	3	75	5	920	350	70	400
780/5.5	5.5	137.5	9	920	790	70	680
780/7.5	7.5	187.5	7	920	790	70	680
900/10	10	250	9	920	1050	70	750
900/12.5	12.5	312.5	11	920	1050	70	750
1100/16	16	400	7	1250	2050	70	1150
1100/20	20	500	9	1250	2050	70	1150
1100/23	23	575	11	1250	2050	70	1150
1225/28	28	700	11	1250	2600	70	1300
1225/30	30	750	13	1250	2600	70	1300
1380/33	33	825	11	1250	3400	75	1450
1380/37	37	925	13	1350	3650	75	1550
1380/42	42	1050	15	1350	3650	75	1550
1380/50	50	1250	13	1500	3870	75	1600
1380/53	53	1325	15	1650	4100	75	1750
1500/55	55	1375	17	1500	4650	75	1900
1500/61	61	1525	17	1650	4900	75	2000
1650/70	70	1750	16	1810	5600	75	2200
1650/78	78	1950	18	1810	5600	75	2200
1850/100	100	2500	20	1810	6000	75	4000

## Oscillating Sluice Header – PLV (W)

Oscillating sluice header – PLV (W). Filter tank equipped with Pressure gauge DN 50 flange; oscillator drive connection sluice header inlet DN 80



“

We are committed to global service support, providing comprehensive services to our clients all over the world. This includes year-round maintenance, prompt delivery of spare parts, site commissioning and installations.

”



One of our manufacturing plants in Ipoh, Malaysia

### PMI offers a wide range of products, which include:

- Filter Presses, Pressure Leaf Filters, Reverse Pulse Filter, Cartridge Filters, Bag Filters, Nutsch Filters, Centri Filters, Tilting Filters, Level Leaf Filters, Agitators, Static Mixers.
- Pressure Vessels, Tanks and Silos, Columns, Towers, Dryers, Shell & Tube Heat Exchangers, Condensers, Heaters, Coolers, Reboilers, and General Steel & Stainless Steel Fabrication & Site Erection Works.



**PMI-Technology Sdn Bhd**  
Company No. 568062-K

No. 17 & 19, Jalan Pengacara U1/48,  
Temasya Industrial Park,  
40150 Shah Alam,  
Selangor Darul Ehsan, Malaysia.  
Tel: +603 5569 3993/4240  
Fax: +603 5569 3131  
Email: [info@pmi-group.com](mailto:info@pmi-group.com)  
[www.pmi-group.com](http://www.pmi-group.com)



Cert No. KLR6007966

Agent's Contact / Sales Person

